

XE270DK

Hydraulic Excavator



Advanced Configuration

Ecological and economical

- ▶ Cummins engine with low fuel consumption, low emission can provide strong power
- ▶ High pressure common rail system improve combustion efficiency.
- ▶ With optimized engine power curves and low speed large torque output

Multiple applications

- ▶ Different boom and bucket combinations maximize utilization of different conditions;
- ▶ Multi-functional machine system meets various job requirements such as digging and crushing

Comfortable operating experience

- ▶ Air Conditioner and Heater and multi-channel stereo air input system ensure the appropriate temperature
- ▶ Equipped with advanced audio system
- ▶ The cab equipped with hydraulic shock absorbers has multi-directional and multi-level adjustment functions

Excellent after-sales service

- ▶ Global after-sales service system and quick response mechanism
- ▶ Real-time technical consultation and maintenance

Convenient maintenance

- ▶ Easy maintenance design concept makes your maintenance done without dead angle
- ▶ Daily maintenance points are within your reach

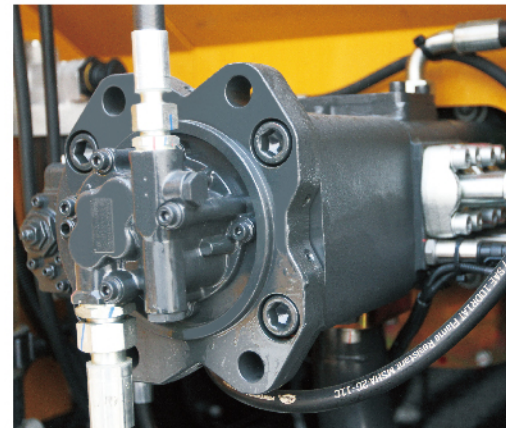
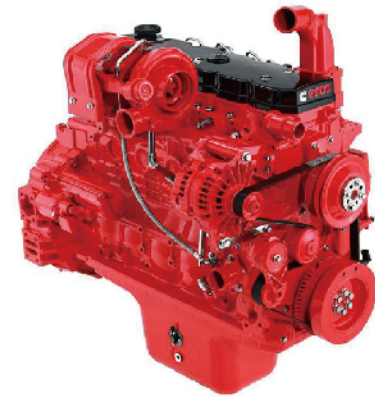
Safe and durable

- ▶ Upgraded undercarriage structure improves load bearing performance
- ▶ Strengthened key stress-bearing parts of chain links
- ▶ Strengthened and wear-resistant bucket is more durable



Ecological And Economical

- ▶ With Cummins imported direct fuel injection engine adopted, the machine has stronger power and higher fuel economy.
- ▶ High pressure common rail system realizes optimum fuel injection control so as to effectively improve combustion efficiency. The excellent engine system makes the machine's high altitude adaptability and **can work in an area of 5,000 meters above sea level.**
- ▶ A new generation of intelligent electronic control system, which integrates intelligence, environmental protection and safety, to achieve the balance of power and hydraulic load; Intelligent electronic control can achieve remote control, with new memory function, the operation process will be recorded at any time, and power conversion device will optimize power use.
- ▶ With optimized engine power curves and low speed large torque output, the fuel consumption is greatly reduced while providing strong power, which satisfies dynamic balance and economy of power output and fuel consumption in heavy-load mode.
- ▶ Efficient positive flow control system has features of high reliability, less pressure loss, high flow distribution efficiency and smooth compound movements, energy conservation, efficiency, controllability and other aspects are greatly improved.
- ▶ Fully optimized new hydraulic system, **Increased workload by 12% compared to previous generation.**



Comfortable And Safe

Driver's cab

- ▶ With high strength pillar with irregular shape adopted, the rigidity of driver's cab is greatly improved and safety is guaranteed.
- ▶ Anti-rolling cab is equipped, top protection, front protection and side protection can be installed to meet the requirements of falling objects so as to further improve safety of the cab.

Wide field of vision

- ▶ The panoramic sunroof design brings wider field of vision. Centralized arrangement of the buttons makes driving experience be overall upgraded.



Trim arrangement

- ▶ Brand new interior design, commonly used electrical switches and spare switches are integrated in the right side interior trims, centralized location brings easy operation.
- ▶ The mounting holes for low temperature start, quick change and other expansion function are reserved.
- ▶ Brand new electronic air conditioning system provides strong refrigerating and heating capability, and the automatic adjustment thermostat of air conditioner provides the comfortable temperature that is the most suitable for human body.

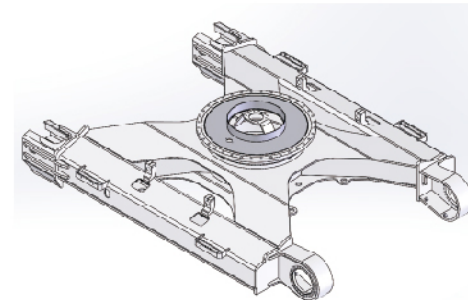


Comfortable damping

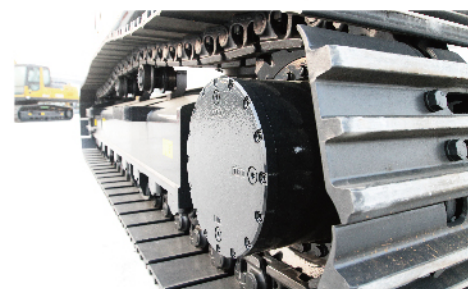
- ▶ Damping spring is added inside high performance silicone oil shock absorber, which can effectively isolates the shock wave in specific frequency band and improves comfort.

Reliable And Durable

- ▶ The turntable adopts a rigid box structure to provide higher strength and improve the cab shock absorption. The engine mounting base structure is strengthened to improve shock absorption. With main body adopting I-beam rigid structure, the whole machine's strength is intensified, and the turntable side beam adopts the D-tube structure to improve its ability to resist external impact. The main body of the turntable adopts robot welding technology to improve the durability and safety of the structural parts.



- ▶ The travelling mechanism adopts strengthened key parts of the chain rails bearing stress to improve the strength and impact resistance of the chain rails, and the service life of the track is greatly improved. The butter dish is changed from welding parts to integral stamping parts, which ensures the installation roundness of the sealing ring, prevents the sealing ring from wrinkling and improves the sealing performance. With strengthened X-beam section, and the strength of the end face is greatly improved by increasing the size, thickness and structure of the box beam.



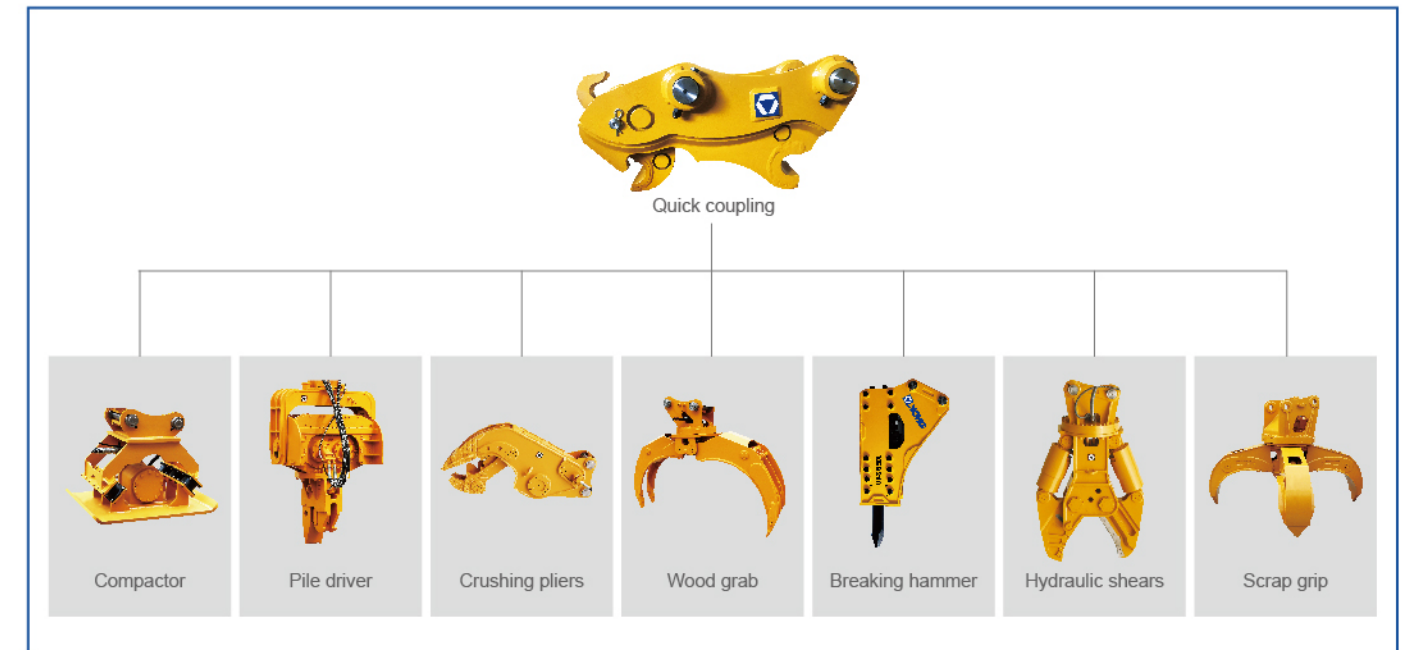
Intelligent Control

- ▶ The intelligent electronic control system can achieve integrated control for engine speed and input power of hydraulic pump, meanwhile remote fault monitoring and self-diagnostic function is available.
- ▶ The remote control platform is completed, and functions including remote fault diagnosis, remote setting of host operating parameters, remote monitoring of working status, automatic prompting of maintenance information and other functions are improved.
- ▶ New generation 8-inch color touch screen display brings more detailed menu layout, clearer screen displaying and more friendly human-computer interface, and video displaying function is reserved and various video formats can be supported.



Multiple Application Conditions

- ▶ The independently developed multi-functional intelligent work tool control system can realize crushing, shearing, cleaning, compacting, milling, transporting, pinching, grasping, scraping, loosening, lifting, and other operations, and can truly integrate multiple operations into one machine.
- ▶ Different boom and bucket combinations can adapt to various working conditions



Maintenance And Service

- ▶ Daily maintenance points are within your reach: Whether it is fuel filter, oil filter, pilot filter, you can directly service it on the ground, the operation is easy and cost saving.
- ▶ A wide range of after-sales service system, quick-response rescue mechanism can ensure that you use at ease



XE270DK hydraulic excavator is a modified product of XCMG's DK series, which is specially designed for heavy-duty operations in small and medium-sized mines and quarries. Based on "efficient, reliable, intelligent and energy saving", dig down into product performances. Through the program optimization, operation speed is paired with adaptive fuel consumption in all working modes, and fuel consumption will be reduced by 6% without affecting the efficiency. With reinforced boom and arm, standard 1.3m³ rock bucket, and optimized bucket shape, the digging resistance will be decreased and the durability will be doubled. Can be widely used in earth and stone works, municipal construction, highway and bridge construction, trenching and construction of canals, farmland water conservancy construction, small mine operations and other projects.



Standard Configuration

	Name of equipment	XE270DK
Engine	Engine model QSB7	QSB6.7
	Automatic preheating	
	Oil-water separator with water level indication sensor	
	Radial seal air cleaner	
	Air prefilter	
	Radiator dust screen	
	Fuel marker	
	Air pressure difference indicator	
	Automatic idle speed	
	Boom/arm flow regeneration	
Hydraulic system	Auxiliary hydraulic valve	
	Reverse rotation damping valve	
	Automatic rotation parking brake	
	Hydraulic buffer valve	
	Straight hydraulic circuit	
	Boom priority valve	
	Rotary logic valve	
Rotary anti-sway valve		
Cab and interior trim	Fully adjustable mechanical suspension seat	
	Adjustable seat armrest	
	Seat belt (51 mm [2 "] wide)	
	Openable windscreen with auxiliary device	
Cab and interior trim	Double laminated windshield and other toughened windows	
	Sliding door upper window	
	Bi-directional air outlet air conditioner with defroster (automatic type) (pressurization function)	
	Color liquid crystal display capable of displaying warning information, filter / liquid replacement information and working hours	

Cab and interior trim	Control handle	
	Travel control pedal with detachable manual control lever	
	Two stereo speakers	
	Beverage cup holder	
	Coat and hat hook	
	Cleanable floor mat	
	Air conditioning system	
	High and low gears shift	
	One-key boost mode	
	Top sunroof	
Safety and security configuration	Intermittent multi-gear wiper	
	Cup holder/envelope	
	Radio receiver	
	Driving door locks and cabin locks	
	Alarm horn	
	Isolation plate between engine and oil pump chamber	
	Rear window emergency exit	
	Battery circuit breaker	
	Boom and arm retaining valve	
	Overheat alarm	
Safety handrails and pedals		
Chassis system and shield	Anti-skid plate/anti-skid paste	
	Hydraulic safety locking lever	
	Emergency escape hammer	
	Left and right rearview mirrors	
	Bottom frame traction ring	
	600 mm (24 ") three-rib track shoe	
	Protective device kit: chassis bottom sealing plate, walking motor sealing plate	

Chassis system and shield	single guardrail device of track
	Boom 6.0m
Working device	Arm 2.96m
	Bucket 1.3m ³ strengthened bucket
Lamp	Boom working lamp at left and right side
	Working lamp installed on the right side of storage box
Electrical system	Lamp inside the cab
	Battery (2×850CCA)
	70A Alternator
	7.8KW start motor
Counterweight	24V Cigar lighter
	5.4t Counterweight

Cab and interior trim	Rotating alarm light
	Counterweight rearview mirror
	Roll off protection structure (ROPS)
Chassis system and shield	Falling object protective structure (FOPS)
	600 mm (24 ") double-rib track plate
	700 mm (28 ") double-rib track plate
	800 mm (31 ") double-rib track plate
	700 mm (28 ") three-rib track plate
Working device	800 mm (31 ") three-rib track plate
	Arm 2.5m
	1.1m ³ Rock bucket
	1.1-1.3m ³ strengthened bucket
	1.4m ³ Earthwork bucket
	Quick coupler
	Hydraulic breaker
	Travel alarm
	Camera
	5V USB interface
Front working lamp installed on the top of cab	
Rear working lamp installed on the top of cab	
200kg vice counterweight (two for options)	
Electric self-lubrication system	
Arm concentration	

Optional Configuration

	Name of equipment	XE270DK
Engine	Oil-water separator with heater (24V)	
	Oil bath type air prefilter	
	arm concentration	
	Fuel refueling pump 50L/min	
Hydraulic system	Hydraulic pipeline: quartering hammer	
	Operating modes switch	
	Hydraulic oil ISO VG 32, 68	
Cab and interior trim	Spare valve disc	
	Retractable seat belt (51 mm [2 "] wide)	
	Heating and cooling storage box	
	Fire extinguisher	
	Explosion-proof valve of boom and arm pipeline	
	Reserved switch for auxiliary equipment	

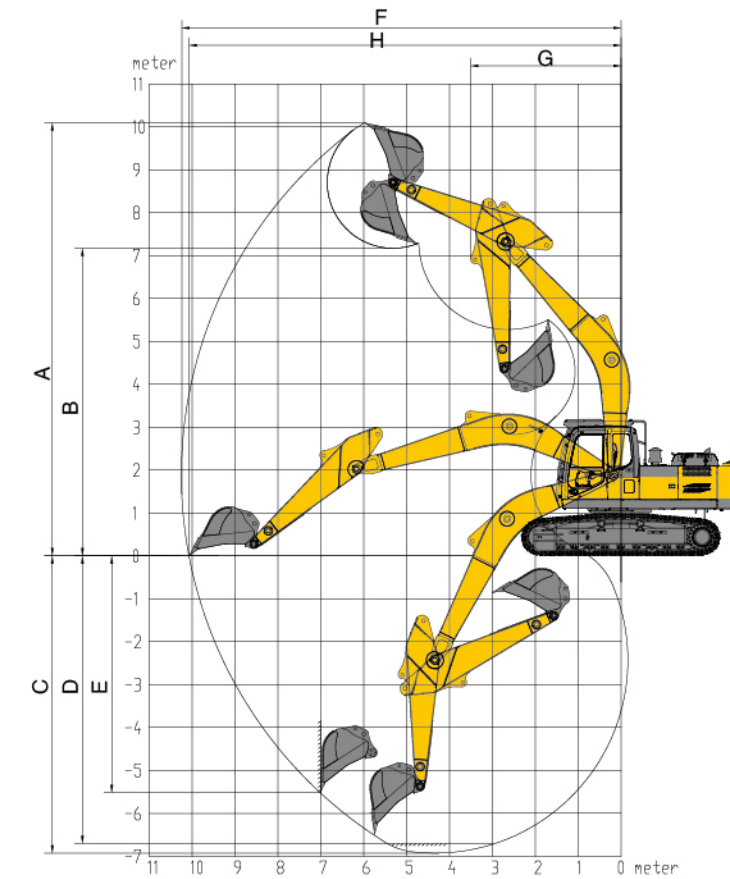
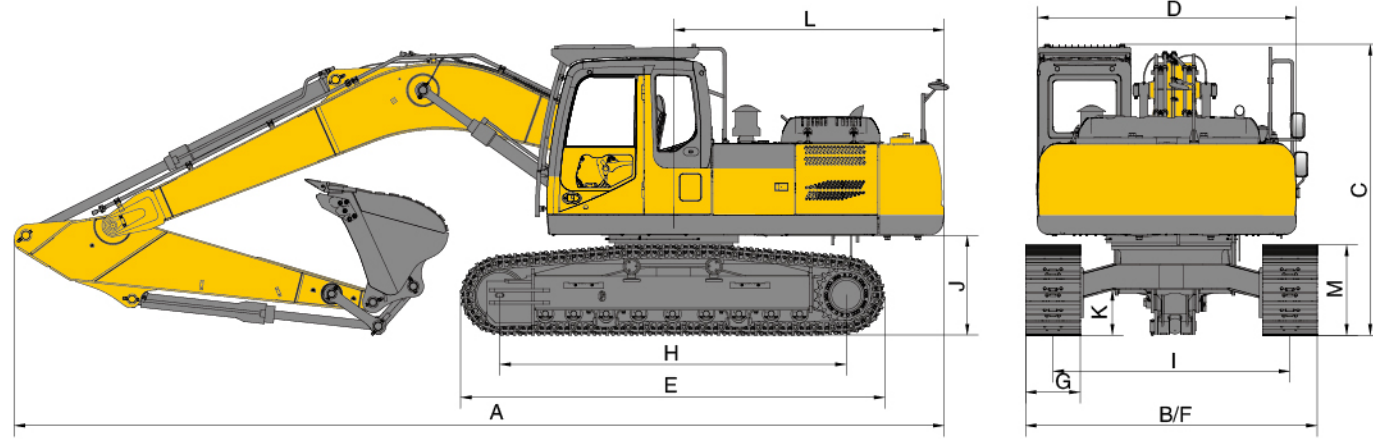
Main Specifications

Item	unit	Main specifications	
Sales Model	/	XE270DK	
Operating Weight	Kg	26500	
Bucket Capacity	m ³	1.1-1.4	
Engine	Model	/	QSB7
	Direct injection	/	√
	Four strokes	/	√
	Water cooling	/	√
	Turbocharging	/	√
	Air cooled	/	√
	No.of cylinders	/	6
	Output power	kw/rpm	150/2050
	Maximum torque/speed	N.m/rpm	825/1250
	Displacement	L	6.7
Main Performance	Travel speed	km/h	6.1/3.8
	Swing speed	r/min	11.4
	Gradeability	°	35
	Ground pressure	kPa	52.1
	Bucket digging force	kN	185
Hydraulic System	Arm digging force	kN	129
	Maximum tractive force	kN	206
	Main pump	/	/
	Rated flow of main pump	L/min	2×259
	Main safety valve pressure	MPa	34.3/37
	Travel system pressure	MPa	34.3
	Rotary system pressure	MPa	25
	Pilot system pressure	MPa	3.9

	Item	Unit	Parameters
Oil Capacity	Fuel tank capacity	L	400
	Hydraulic tank capacity	L	220
	Engine oil capacity	L	19.5
Standard configuration	Length of boom	mm	6000
	Length of arm	mm	2964
	Bucket capacity	m ³	1.3
Optional configuration	Length of boom	mm	/
	Length of arm	mm	2500
	Bucket capacity	m ³	1.1 Rock bucket/1.3/1.4 Earth Working bucket

Dimensions

	Item	Unit	Parameters
Apperance size	A Overall length	mm	10170
	B Overall width	mm	3190
	C Overall height	mm	3175
	D Width of platform	mm	2995
	E Track Length	mm	4640
	F Overall width of chassis	mm	3190
	G Track width	mm	600
	H Length to center of rollers	mm	3790
	I Track Gauge	mm	2590
	J Counterweight Clearance	mm	1090
	K Min. ground clearance	mm	495
	L Min. tail swing radius	mm	2955
	M Track height	mm	988



Working Range

Item	Unit	Parameters
A Max. digging height	mm	10095
B Max. dumping height	mm	7170
C Max. digging depth	mm	6925
D Maximum depth cut for 2240mm(8 ft) level bottom	mm	6705
E Max. vertical wall digging depth	mm	5520
F Max. digging radius	mm	10240
G Min. swing radius	mm	3510

Lifting Capacity

Lifting point height (m)	Rated lift capacity – Straight ahead (back) (kg)					Rated lift capacity – over-side (kg)					Lifting capacity at maximum radius
	Lifting point radius (m)					Lifting point radius (m)					
	1.5	3	4.5	6	7.5	1.5	3	4.5	6	7.5	
7.5						*3850					*3250
6				*5230	*5230	*4830			*5230	4770	*4140
4.5			*7380	*6520	*5754	*4100		*7380	6550	4640	3790
3			*10050	*7120	5930	*4280		*8380	5530	4320	3490
1.5			*12100	*8050	5680	*4350		7330	5635	4190	3290
Ground			*12270	8350	5430	*4550		7430	5240	3865	3110
-1.5		*10250	*12040	8526	5470	*4780	*10250	7920	5420	3640	2980
-3	*13050	*12950	*12547	8665		5940	*13050	11495	7991	5361	3760
-4.5		*15863	*10100			*7160	14934	8236			4950

Capacities marked with an asterisk(*) are limited by hydraulic capacities.



Machmall.com is an electromechanical product platform officially launched by XCMG, aiming to provide global customers with a complete set of high-quality construction machinery solutions and supporting equipment.

Xuzhou Construction Machinery Group Co., Ltd. (XCMG Group), founded in 1943, is the fourth largest worldwide construction machinery manufacturer and the largest in China with products covering 183 countries and regions.

XCMG have 12 complete solutions: Crane lifting, Mining Construction, Earth-moving Solutions, Road Machinery, Concrete Equipment, Tunnel and Underground Space Construction, Mobile Elevating Work Platform (MEWP), Piling and Non-excavation Equipment, Transportation Equipment, Environmental Sanitation Equipment, Firefighting, Safety and Emergency Rescue

徐工徐工，助您成功

— XCMG for your success —

